

MINISTERS:

Everyone! All believers have spiritual gifts to build up the Kingdom. (Eph.4:11-14)

ELECTED NON-STAFF LEADERS:

ELDERS + POINT LEADERS = CHURCH BOARD

ELDERS: Duff Crerar, Frank Fehr,
Barry Norris, John Murray,
Joanne Stewart,
Jeff Nutting

DEACONS: Paul Oostra (Point Leader),
Bernie Plett, Brian Scarth,
Neil Goodliffe, Joe Hustler,
Ryan Power-Fardy, Arron Johnson

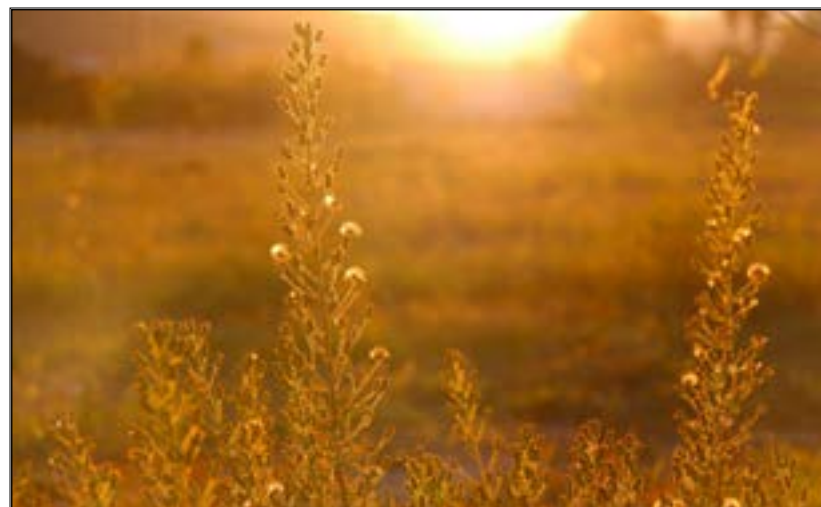
POINT LEADERS: Chris Thompson (Adults), Karen Burns (Children),
Rosina Norris (Community), Mark Larson (Missions),
Duncan McNabb (Stewardship), Nathanael Sterr (Worship & Creative Arts),
Naomi Scott (Youth), Carolyn Daigle (Pineridge Camp)

MINISTERIAL STAFF:

Alan Jones - Sr. Minister & Highland Park Site Minister
Scott Pence- Mission Heights Site Minister
Jason Wood - Eastise Site Minister
Ryan Duford - Young Adults Director
Mark Wolfe - Youth Ministries Director
Ruth Falk - Family & Children's Ministries Director

PART-TIME ADMINISTRATIVE STAFF:

Alison Hofstede - Communications Coordinator
Wendy Small - Financial Administrator
Christina Wood - Janitorial Care



Jesus spoke to the crowds again: "I am the light that shines through the cosmos; if you walk with Me, you will thrive in the nourishing light that gives life and will not know darkness."
- John 8:12

The purpose of the Grande Prairie Church of Christ
is to praise and worship God and to mature and
assist others in maturing toward the image of Christ

SEPTEMBER 2018

COMMUNITY LIFE

WELCOME

We love to hear from you and to pray for you- fill out a connection card or email us today!

ABOUT US

We are a multi-site fellowship of Jesus followers who seek to live out a kingdom-first perspective in our city.

For more, visit: gpchurchofchrist.com

CONNECT



office@gpchurchofchrist.com
780-538-4211

Main office & mailing address for all sites:
9602-92 Ave. Grande Prairie, AB T8V 0H4

Regular Programs Resume

Over the summer our programs take a break, but over the next few weeks we look forward to kicking off a number of small groups, activities for men and women, and some great programs for kids and teenagers. To get involved in any of these programs as a volunteer or participant, please fill out a "Let's Connect" card and someone will touch base with you regarding location/time/sign-up details.

Small Group Hosts & Leaders Wanted

If you are interested in hosting and/or leading a small group this fall, please contact Scott or Alan at the church office. A training session will be available for current and potential small group leaders on September 22.

Man Camp: Oct. 19-21

Get out of town for a weekend of connecting with other guys, pick-up games of all kinds (table games, sports, whatever you choose) and thought-provoking large group sessions. Contact the church office this week to sign up or to sponsor a friend. Registration is only complete when full payment has been received.

One Service at 10am Continues for Highland Park

Our Highland Park site will continue with one service at 10am through the fall to enjoy the building energy as people return from holidays and various programs kick off. Please spread the word and invite your friends to join us next Sunday at 10am!

Directory Update

Every fall we like to update our database to ensure you are not missing out on church events, resources and connection. Please fill out the "Let's Connect" card in your bulletin and drop in the offering today. Our staff and elders would love to pray for you, mail you an encouragement card, or follow-up on any questions you have.

Ways We Give

THANK YOU for generously supporting the work God is doing through our church by giving by Cash, Cheque, Pre-Authorised Debit (P.A.D.), Debit at the main office, and E-Transfer (finances@gpchurchofchrist.com, password: "offering").

We Are Multi-Site

As a multi-site church, we are one big family meeting at different times and places in our city. We share a board, budget, leadership, ministries, mission and overall vision. Whole church events like festivals, camps, meetings or combined services are great opportunities for connecting with our extended church family.

WORSHIP

*Joining together to
encounter God*

COMMUNITY

*Participating together in the
life & mission of Jesus*

EMBODIMENT

*Living Christ-rooted lives of
grace, truth, and hope*

BENEVOLENCE

*Caring for those who are
marginalized*

EVANGELISM

*Inviting others to join us on
our journey toward Jesus*